

1-1-2006

Foreign-Born Population in Selected Ohio Cities, 1870 to 2000 A Brief Descriptive Report

Mark Salling

Cleveland State University, m.salling@csuohio.edu

Ellen Cyran

Cleveland State University, e.cyran@csuohio.edu

How does access to this work benefit you? Let us know!

Follow this and additional works at: https://engagedscholarship.csuohio.edu/urban_facpub

 Part of the [Categorical Data Analysis Commons](#), [Databases and Information Systems Commons](#), [Geographic Information Sciences Commons](#), [Longitudinal Data Analysis and Time Series Commons](#), and the [Urban Studies Commons](#)

Repository Citation

Salling, Mark and Cyran, Ellen, "Foreign-Born Population in Selected Ohio Cities, 1870 to 2000 A Brief Descriptive Report" (2006).
Urban Publications. 0 1 2 3 356.

https://engagedscholarship.csuohio.edu/urban_facpub/356

This Report is brought to you for free and open access by the Maxine Goodman Levin College of Urban Affairs at EngagedScholarship@CSU. It has been accepted for inclusion in Urban Publications by an authorized administrator of EngagedScholarship@CSU. For more information, please contact library.es@csuohio.edu.

Foreign-Born Population in Selected Ohio Cities, 1870 to 2000
A Brief Descriptive Report

By

Mark Salling, Ph.D.
and
Ellen Cyran

Northern Ohio Data & Information Service (NODIS)
Maxine Goodman Levin College of Urban Affairs
Cleveland State University

March 8, 2006

Introduction

This brief descriptive analysis provides data and some graphic comparisons of changes in the number and percent of foreign-born populations in selected Ohio cities. It is based on data reported by the U.S. Census Bureau and the reader is referred to the following source for technical details about the data.

<http://www.census.gov/population/www/documentation/twps0081/twps0081.pdf>

Though the Census Bureau report covers 1850 to 2000, data for Ohio cities is complete only from 1870 foreword. The table at the end of this report provides the data for the Ohio cities and those that were chosen for comparison.

Chicago, Pittsburgh, and Indianapolis were chosen to compare with Cleveland and the other Ohio Cities. Chicago offers a comparison to a very large and older city in the Midwest, Indianapolis is a newer and growing city in the region, and Pittsburgh represents an older, highly industrialized city with many characteristics similar to Cleveland. Los Angeles is included because it represents the explosion of new foreign-born population from Latin America and Asia.

Graphs and descriptive analyses are presented for both the number of foreign-born persons and their percent age of the population.

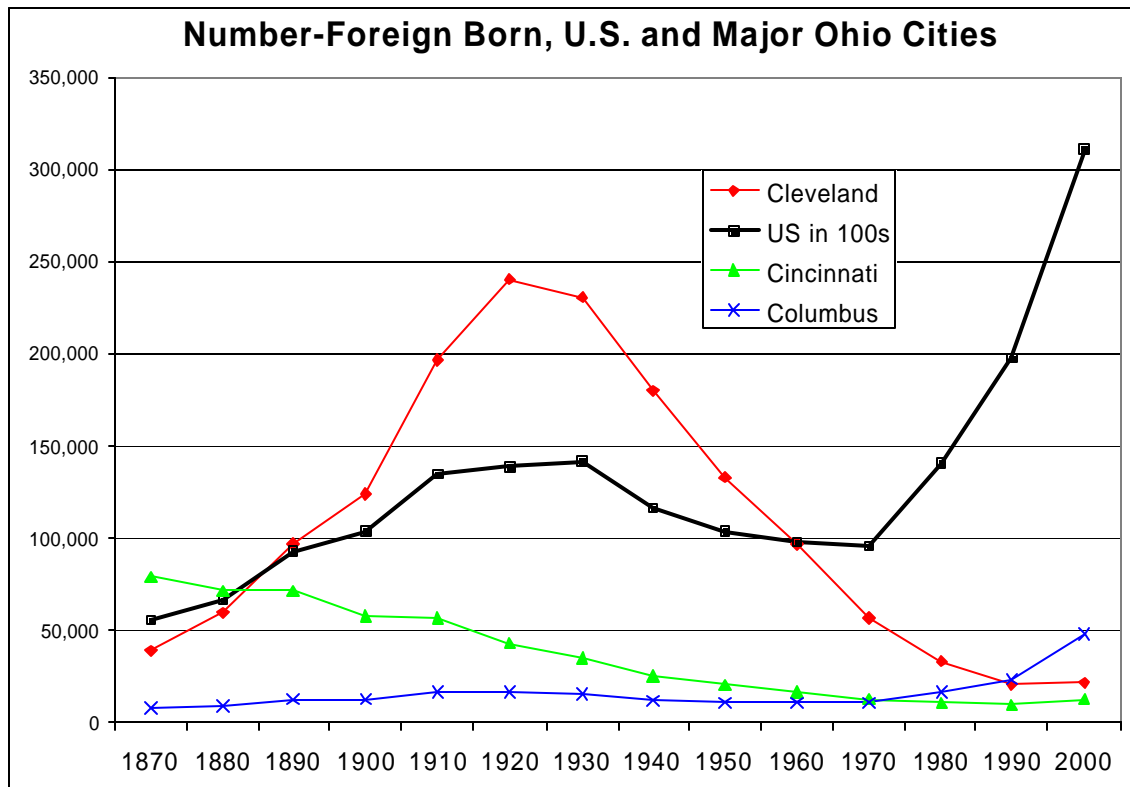
Number of Foreign-Born Persons

Nationally, foreign in-migration accelerated with industrialization in the mid-to-late 1800s. Cincinnati grew through migration earlier than Cleveland or Columbus and experienced declining foreign migration until 1990.

While the number of foreign-born persons in the U.S. accelerated after 1970, Cleveland continued to decline in the number of foreign-born persons from 1920 to 1990 (from 240,000 to 21,000). However, much of this decline is the result of the suburbanization of the population, including those born abroad. Cuyahoga County had 88,761 foreign-born residents in 2000. Map 1 provides a map of the distribution of foreign-born population in the seven-county region around Cleveland. Nevertheless, as noted below, the percentage of the city's population that was foreign-born also declined considerably until 1990.

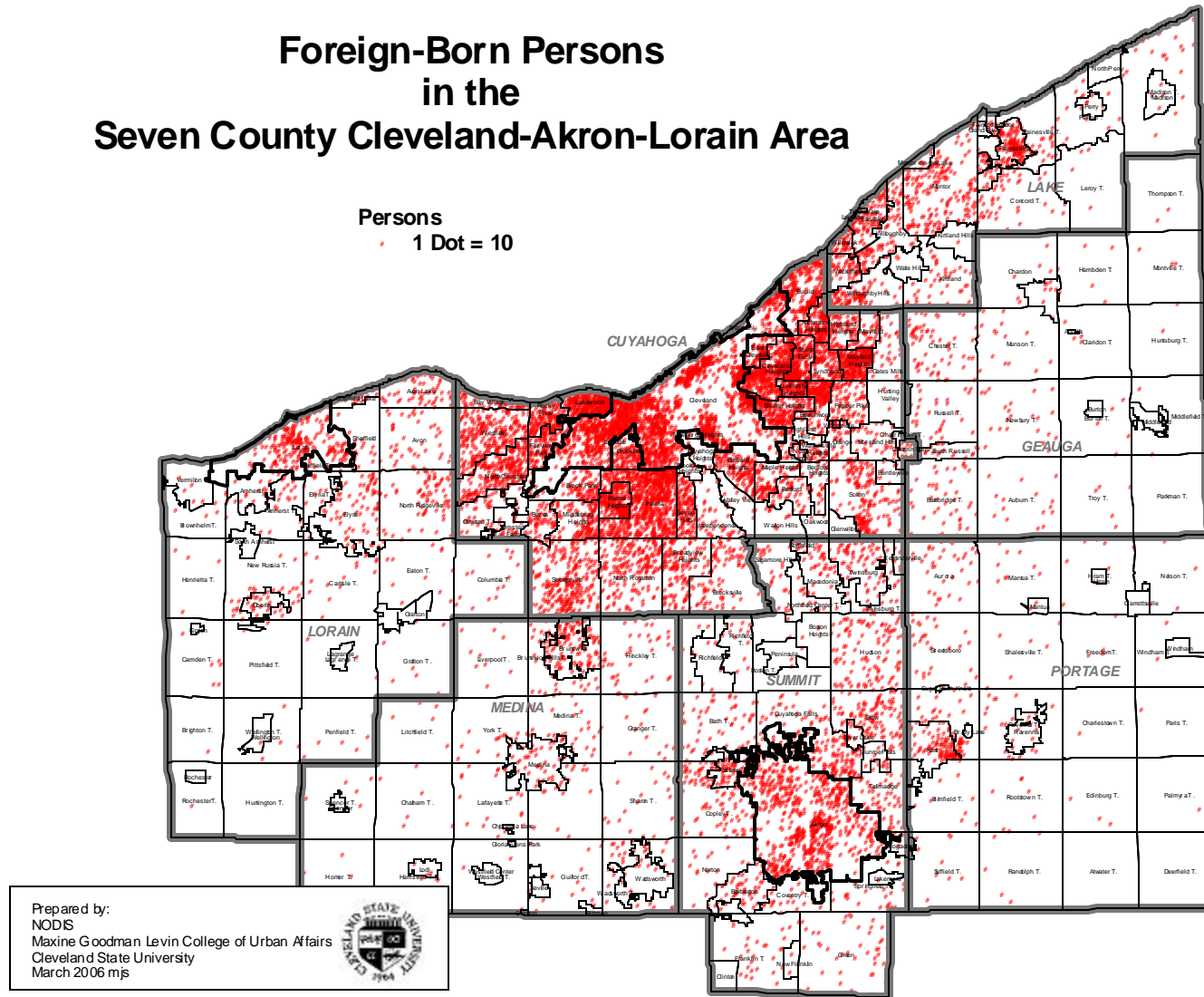
The 1990s saw an increase in the number of foreign-born persons in all three Ohio cities, with the biggest gains occurring in Columbus, which more than doubled its foreign-born from 23,471 to 47,713. Columbus grew through migration, but it also grew through annexation, thus making comparisons with relatively fixed-area cities like Cleveland.

Figure 1: Number of Foreign-Born Persons, U.S., Cincinnati, Cleveland, and Columbus



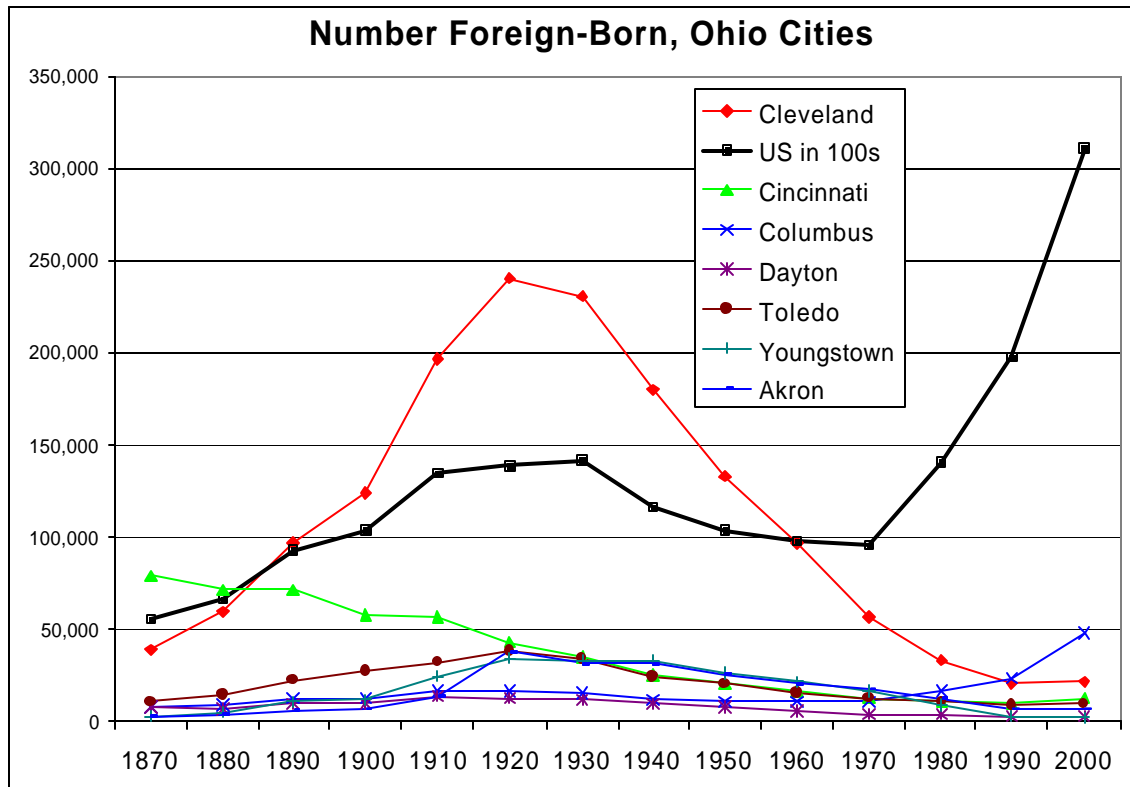
Map 1: Cleveland-Akron-Lorain Area Foreign-Born Population Distribution in 2000

Foreign-Born Persons in the Seven County Cleveland-Akron-Lorain Area



Largely due to declining numbers of foreign-born persons in Cincinnati, the cities of Akron, Dayton, Toledo, and Youngstown had comparable numbers of foreign-born population to Cincinnati by 1920. Akron, with significant annexation and development in the rubber industry there, saw a rapid increase between 1910 and 1920, increasing almost three-fold, from 13,249 to 38,021 in that decade.

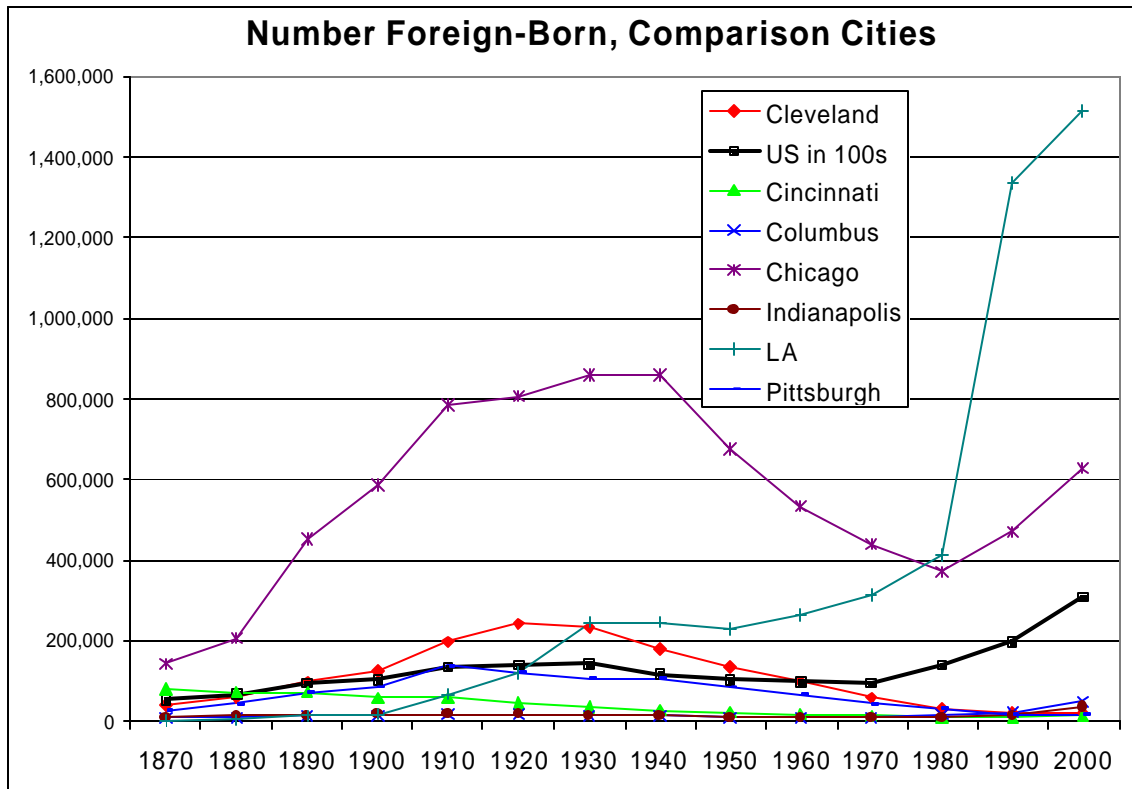
Figure 2: Number of Foreign-Born Persons, Ohio Cities



Chicago's foreign-born population, while always greater in magnitude than Ohio's cities in this period, showed a similar pattern of growth and decline to that of the Cleveland (and the nation). There was growth into the middle of the 20th century and decline from 1950 to 1980. Chicago's growth in foreign-born population in the twenty years between 1980 and 2000 was faster than any of the Ohio cities.

LA started to rapidly attract foreign migration in the post WWII period and that growth accelerated after 1980. More than 1.5 million residents of the city were foreign-born in 2000, more than triple the entire population of Cleveland that year.

Figure 3: Number of Foreign-Born, Comparison with Cities

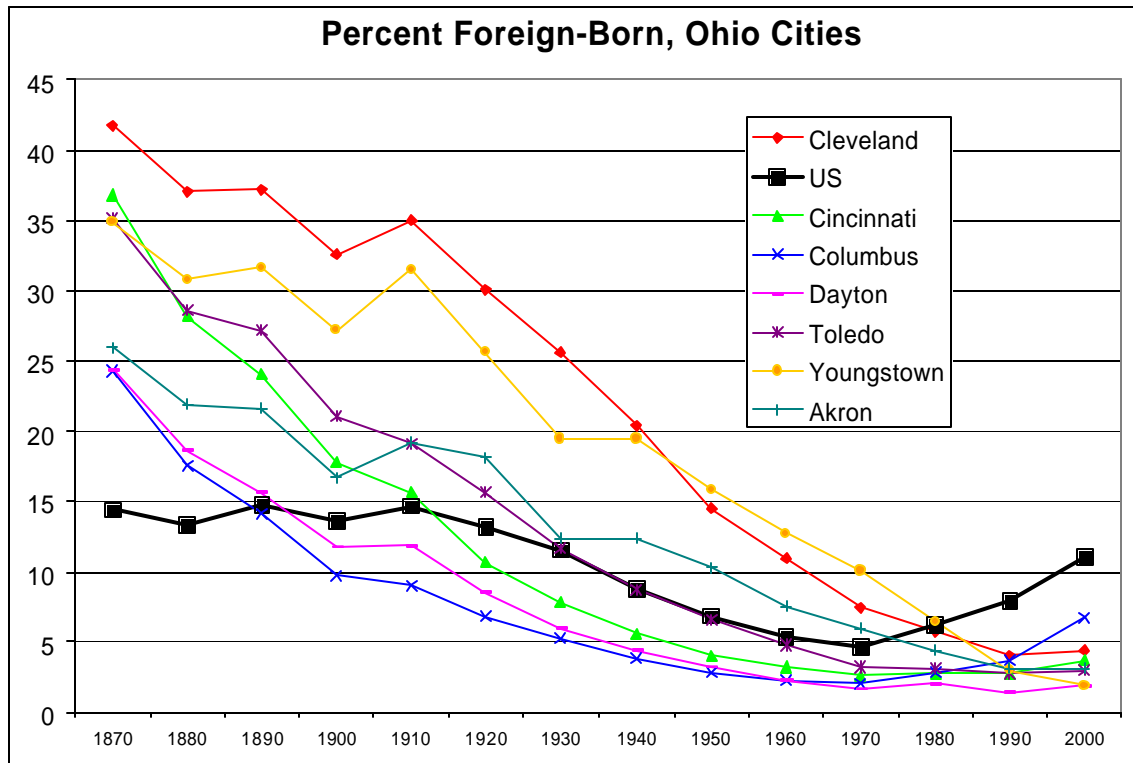


Percent of Population

Among other major Ohio cities, Cincinnati, Cleveland, Toledo, and Youngstown showed the greatest proportions of foreign-born populations in the late 1800s and Cleveland and Youngstown retained much of those large percentages into the early-to-mid 1900s.

However by 1990 percentages in these two cities roughly equaled those in the other Ohio cities. Youngstown dropped below all the other cities in percent foreign-born population by 2000. Columbus has shown the greatest increase in the last three decades.

Figure 4: Percent Foreign-Born, Ohio Cities



The percent of the population that was foreign-born generally declined in the nation from 1870 to 1970, but increased afterward. Among the cities compared here, Los Angeles and Chicago showed much greater increases in the last 30 years than any of the three Ohio cities included in the comparison. Columbus, and to a lesser extent Indianapolis, showed more significant increases than Cleveland. Pittsburgh, Columbus, and Indianapolis, after trailing Cleveland for most of the period, caught or surpassed Cleveland in 2000.

Figure 5: Percent Foreign-Born, Comparisons with Selected Cities

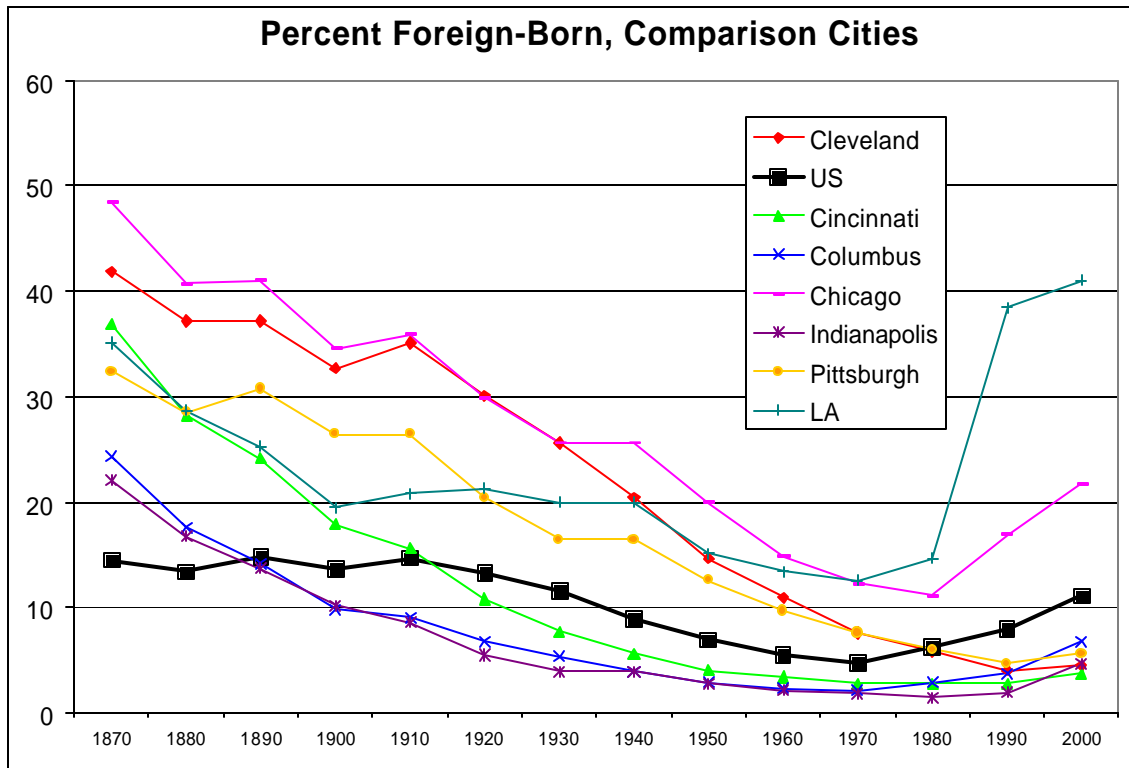


Table 1: Foreign-Born Population in Selected Cities, 1870 to 2000

Foreign Born-Population, 1870 to 2000

Source: U.S. Census Bureau (<http://www.census.gov/population/www/documentation/twps0081/twps0081.html>)

	1870	1880	1890	1900	1910	1920	1930	1940	1950	1960	1970	1980	1990	2000
US	5,567,229	6,679,943	9,249,547	10,341,276	13,515,886	13,920,692	14,204,149	11,594,896	10,347,395	9,738,091	9,619,302	14,079,906	19,767,316	31,107,889
	14.4	13.3	14.8	13.6	14.7	13.2	11.6	8.8	6.9	5.4	4.7	6.2	7.9	11.1
Cleveland	38,815	59,409	97,095	124,631	196,170	240,173	230,946	179,784	132,880	96,584	56,400	33,347	20,975	21,372
	41.8	37.1	37.2	32.6	35.0	30.1	25.6	20.5	14.6	11.0	7.5	5.8	4.1	4.5
Cincinnati	79,612	71,659	71,408	57,961	56,859	42,921	34,986	25,898	20,525	16,600	12,337	10,624	10,045	12,461
	36.8	28.1	24.1	17.8	15.6	10.7	7.8	5.7	4.1	3.3	2.7	2.8	2.8	3.8
Columbus	7,611	9,071	12,488	12,328	16,363	16,187	15,442	12,052	10,465	11,052	11,194	16,455	23,471	47,713
	24.3	17.6	14.2	9.8	9.0	6.8	5.3	3.9	2.9	2.3	2.1	2.9	3.7	6.7
Dayton	7,423	7,246	9,587	10,053	13,892	13,165	12,094	9,361	8,065	6,098	4,199	4,141	2,606	3,245
	24.4	18.7	15.7	11.8	11.9	8.6	6.0	4.4	3.3	2.3	1.7	2.0	1.4	2.0
Toledo	11,099	14,349	22,189	27,822	32,144	38,296	34,001	24,856	20,075	15,383	12,466	11,010	9,263	9,475
	35.1	28.6	27.2	21.1	19.1	15.7	11.7	8.8	6.6	4.8	3.2	3.1	2.8	3.0
Youngstown	2,817	4,757	10,536	12,207	24,896	33,945	33,231	33,231	26,718	21,535	16,851	9,040	2,879	1,605
	34.9	30.8	31.7	27.2	31.5	25.6	19.5	19.5	15.9	12.8	10.1	6.5	3.0	2.0
Akron	2,604	3,611	5,993	7,127	13,249	38,021	31,694	31,694	25,478	20,855	17,363	12,247	6,811	6,911
	26.0	21.9	21.7	16.7	19.2	18.2	12.4	12.4	10.4	7.6	6.0	4.4	3.1	3.2
Chicago	144,557	204,859	450,666	587,112	783,428	808,558	859,409	859,409	675,147	532,970	438,392	373,919	469,187	628,903
	48.4	40.7	41.0	34.6	35.9	29.9	25.5	25.5	19.9	14.8	12.3	11.1	16.9	21.7
Indianapolis	10,657	12,610	14,487	17,122	19,842	17,096	13,854	13,854	10,628	8,930	8,616	10,873	13,963	36,067
	22.1	16.8	13.7	10.1	8.5	5.4	3.8	3.8	2.7	2.1	1.8	1.5	1.9	4.6
Pittsburgh	27,822	44,605	73,289	84,878	140,924	120,792	109,685	109,685	84,903	65,570	45,253	31,275	16,946	18,874
	32.3	28.5	30.7	26.4	26.4	20.5	16.4	16.4	12.6	9.7	7.5	6.0	4.6	5.6
LA	2,004	3,204	12,752	19,964	66,133	122,131	247,135	247,135	227,037	262,940	311,677	410,870	1,336,665	1,512,720
	35.0	28.7	25.3	19.5	20.7	21.2	20.0	20.0	15.1	13.4	12.6	14.6	38.4	40.9

Source: *Historical Census Statistics on the Foreign-Born Population of the United States: 1850-2000*. By Campbell Gibson and Kay Jung. U.S. Census Bureau, Population Division, Working Paper No. 81. February 2006.