



1952

Front Matter

Cleveland-Marshall Law Review

Follow this and additional works at: <https://engagedscholarship.csuohio.edu/clevstlrev>

How does access to this work benefit you? Let us know!

Recommended Citation

1 Clev.-Marshall L. Rev. 1 (1952)

This Article is brought to you for free and open access by the Journals at EngagedScholarship@CSU. It has been accepted for inclusion in Cleveland State Law Review by an authorized editor of EngagedScholarship@CSU. For more information, please contact library.es@csuohio.edu.

CONTENTS

	<i>Page</i>
HISTORY OF CLEVELAND-MARSHALL LAW SCHOOL	7

ARTICLES.

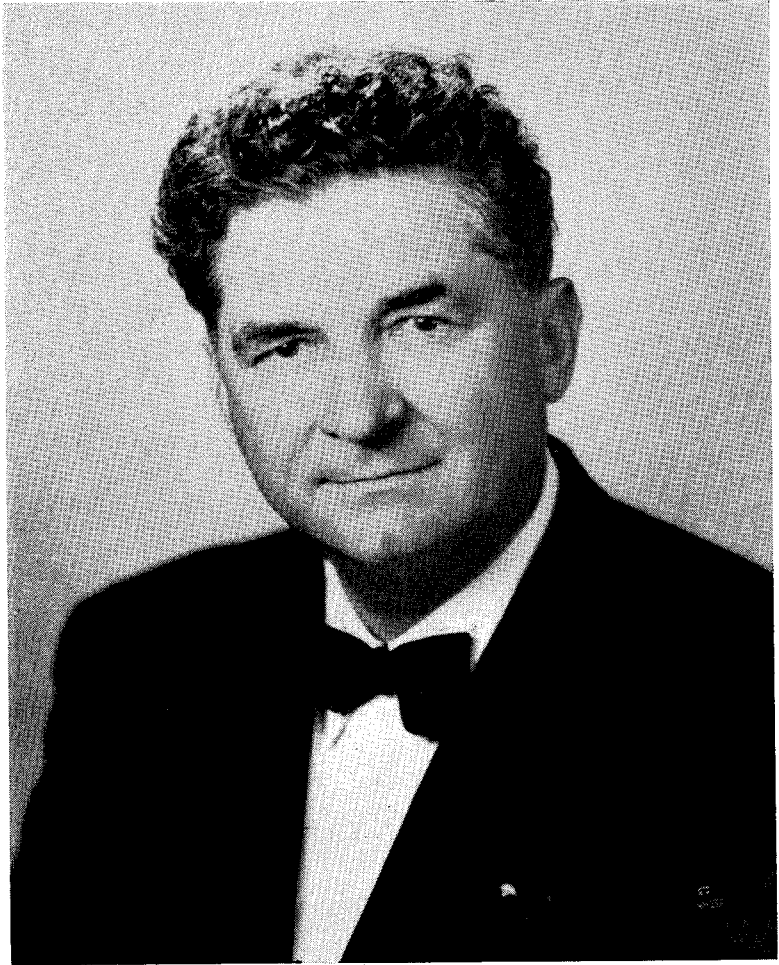
THE NEW OHIO MOTOR VEHICLE SAFETY RESPONSIBILITY ACT—	
<i>Nelson G. Karl</i>	9
DEPORTATION BASED ON CRIMINALITY BEFORE ENTRY—	
<i>Maurice B. Lavine</i>	22
INDUCING BREACH OF CONTRACT IN OHIO—	
<i>Arlene B. Steuer</i>	30
THE EQUITABLE THEORY OF INJUNCTION IN DOMESTIC RELATIONS—	
<i>Moses H. Thompson</i>	45

NOTES.

DISCHARGE OF CORPORATE INDEBTEDNESS AT LESS THAN FACE VALUE UNDER THE INTERNAL REVENUE CODE—	
<i>Harvey Mahlig</i>	58
UNION SECURITY UNDER FEDERAL STATUTES; A PRIMER—	
<i>George Maxwell</i>	65
HUSBAND AND WIFE—CONSORTIUM—RIGHT OF ACTION IN WIFE FOR NEGLIGENT INJURY TO HUSBAND—	
<i>James B. Taylor</i>	73
RELIEF FOR VENDEE FROM VENDOR'S STRIKE—	
<i>Warren D. Langer</i>	78

RECENT DECISION.

MODIFICATION OF DOMICILIARY STATE'S POWER TO TAX VESSELS ENGAGED IN INTERSTATE COMMERCE	85
--	----



FRANK J. LAUSCHE

An Ohioan all his life Mr. Lausche was born in Cleveland in 1895, the son of Slovenian parents who came to America in 1885. After receiving his LL.B. in 1920 from Cleveland-Marshall Law School, then known as John Marshall School of Law, he joined the firm of Locher, Green and Wood. Mr. Lausche rapidly became one of Cleveland's finest trial lawyers and was encouraged to enter politics.

In 1932 he was appointed to fill a vacancy on the municipal bench of Cleveland and he held this post until 1937 at which time he was elected to the bench of Cuyahoga County Court of Common Pleas.

In 1940 Judge Lausche, on his own initiative undertook to eliminate the gambling menace which was threatening Cleveland. His success in this undertaking created great public attention on his behalf and he was requested to seek the office of Mayor of Cleveland. Accepting this opportunity Mr. Lausche was elected by a 61% majority. Conducting his office of Mayor on the foundation of his political creed "to do the greatest good for the greatest number of people," Mr. Lausche had a very successful term of office and was reelected by a 71% majority in 1943.

The record which Mr. Lausche established as Cleveland's mayor attracted the attention of National Democratic Leaders and his next achievement was election to the office of Governor of the State of Ohio.

As Governor, Mr. Lausche has gained the reputation of being "on the level with everyone" and working "always for the good of the whole, never for any special group." He has gained innumerable friends among the people of Ohio and has established himself as one of the outstanding personalities in Ohio political history.

CLEVELAND-MARSHALL LAW SCHOOL

ADMINISTRATION.

JUDGE LEE E. SKEEL, *President*
JUDGE DAVID C. MECK, *Director of Education*
WILSON G. STAPLETON, *Dean*

LAW REVIEW BOARD.

ROBERT L. LEWIS, *Faculty Advisor*
RAY GURNICK, *Co-editor*
TOM FULTON, *Co-editor*
RITA McCONNELL, *Assistant Editor*
CAROL NOLL, *Business Manager*
WINIFRED HIGGINS, *Ass't Business Manager*

Sam Baker
John J. Bickley
G. H. Bradley
James C. Cox
Philip D. Golrick
Ruth H. Hart
Nelson G. Karl
Edna G. Kaufman
Meyer J. Kohn
Warren D. Langer

Lillian W. Long
Harvey Mahlig
William K. Martling
George Maxwell
Curtis Patterson
Gordon B. Robertson
Michael L. Shatten
Victor Spohn
Arlene B. Steuer
Louis Toth