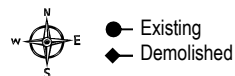




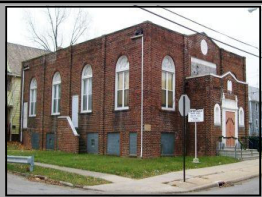
Kneseth Israel
10303 Buckeye
1920 — 1924

Shomrie Hadath
1924 — 1926



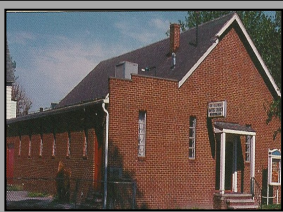
Shomrie Hadath
Merged into
Young Israel in 1972

12302 Parkhill
1924— 1972

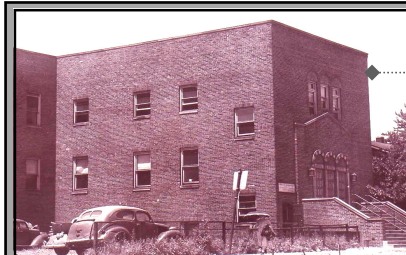


Sherith Israel
3342 E. 119th
1933—1962

Merged with Sherith Jacob (Eddy Road Synagogue) in 1962 to form Sherith Jacob Israel Memorial. In 1969 the combined congregation merged into the Warrensville Center.



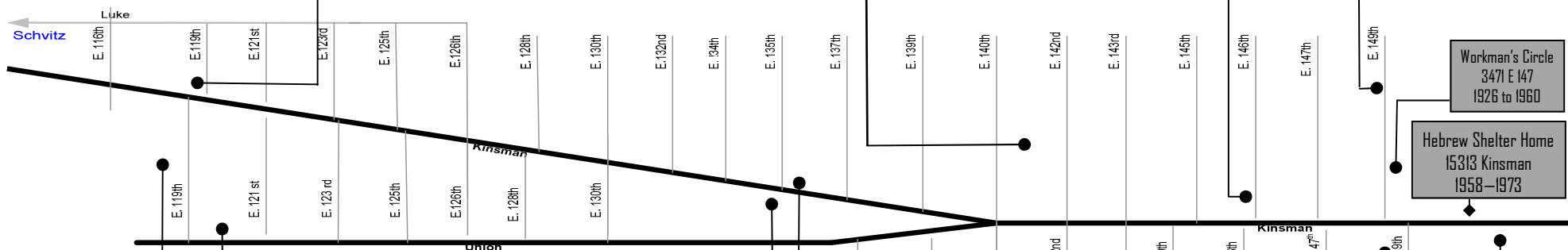
Ohel Jacob Anshe Sfard
Merged into Warrensville Center
as Shaker-Lee in 1972
3471 E. 140th
1925 -1970



**Kinsman Jewish Ctr.—
B'nai Jacob Kol Israel**
Merged into Warrensville Center 959
14627 Kinsman Rd.
1931 - 1959



Rebbe Levin's House
Consolidated into
Kinsman Jewish center 1931
2249 E 149th
1924* - 1931



Workman's Circle
3471 E 147
1926 to 1960

Hebrew Shelter Home
15313 Kinsman
1958—1973

Carpenters Hall
13503 Kinsman
1928—1946

Council Ed. Alliance
13512 Kinsman
1928—1958

Belchik's Ohel Jabneh
Merged into Warrensville Center
Synagogue as Shaker-Lee in 1972
3510 E. 149th



*based on limited supportive documents

Temple Beth-El
15808 Kinsman
1957—1998



**Tifereth Israel
Anshe Sfard**
of Mt. Pleasant

Merged into Warrensville Center
Synagogue as Shaker-Lee in 1972

3386 E. 119th
1922 — 1957



N'avi Zedek

Merged into Warrensville Center
Synagogue in 1959

11901 Union Ave
1923—1957



Shaker - Lee Synagogue

Established by Congregations Ohel Jabneh & Ohel Jacob
Merged into Warrensville Center in 1972

3688 Lee Rd.



**Jewish Cleveland
Haymarket to the Heights**

©2012 Jeff Morris Cleveland, Ohio
Upper Kinsman - Mt. Pleasant
Map # 6 rev.6/12/2013

Nicholas Ave.

Lee Road