



**Beth Hamidroh
Hagodol Beth Israel**
Merged into
Heights Jewish Center 1947

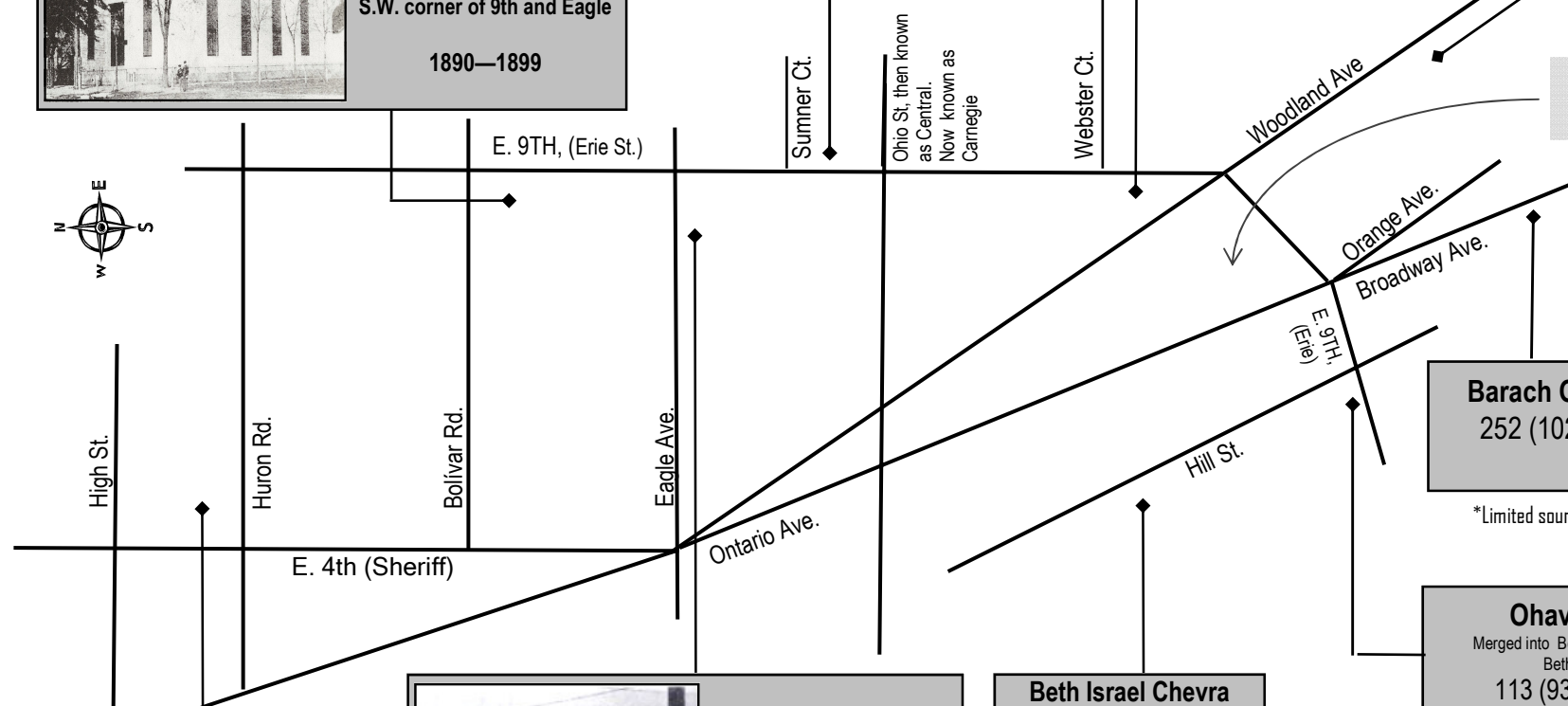
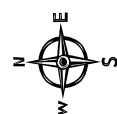
2300 E. 9th
S.W. corner of 9th and Eagle

1890—1899

Knesseth Israel
Merged into Taylor Road Synag. 1955
487 Erie Street
2337 E. 9th
1884 -1891

Anshe Emeth
Park Synagogue
550 Erie Street
2458 E. 9th

Knesseth Israel
Merged into Taylor Road Synag. 1955
234 (1406) Woodland Ave.
1894— 1908



Rough Location of
Cleveland Indians
Home Plate

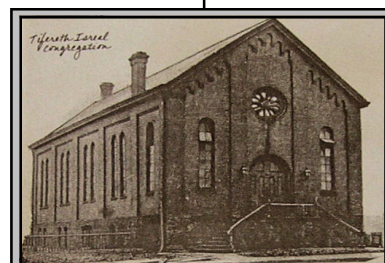
Barach Ohel Chesed*
252 (1026) Broadway
1894

*Limited sources to validate location

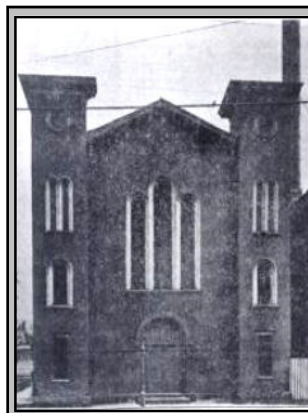
Ohavei Emuna
Merged into Beth Hamidroh Hagodol
Beth Israel 1941
113 (936) Hill Street
1883—1894

Jewish Cleveland
Haymarket to the Heights
© 2013 Jeff Morris Cleveland, Ohio
The Haymarket
Map # 1 rev.6/12/2013

Not for Distribution



Huron Road Synagogue
Tifereth Israel
600 Huron Road
1856 -1894



Anshe Chesed
Eagle Street Synagogue
714 Eagle St.
1846 to 1886

B'nai Jeshurun
1886— 1906

B'nai Jeshurun
Not shown on Map
First meeting in the home of Herman
Sampliner and rented space at the
German Theater on Michigan St.
prior to purchasing 714 Eagle St..

Beth Israel Chevra
Kadisha
85 (824) Hill.
1873—1891

Chevra Agudath Achim
Merged into Taylor Road
Synag. 1953
85 (824) Hill St.
1892 -1899

Where one address number is follow by another, the first number
listed is prior to the change that occurred in 1906.