

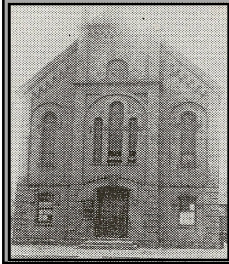
Official name change of  
from **Dhavei Emuno** to  
**Dhave Emuno** recorded  
Feb 1928



- Existing
- ◆ Demolished

### Ohave Emuno

Merged into Beth Hamidros  
Hagadol Beth Israel 1941  
**3680 Scovill**  
1908—1922



### Oheb Zedek

**3782 Scovill**  
1905—1922

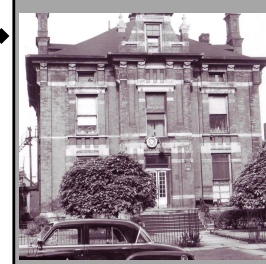


### Chibas Jerusalem

Merged with  
Taylor Road  
Synagogue  
1952

**2329 E. 39th**  
1911—1918

**Orthodox Infants  
Orphan Home**  
**2200 E. 40th**  
1908 — 1926



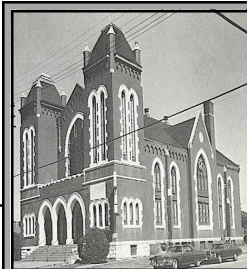
**Tetiever Ahavas Achim**  
Cedar Road  
**2565 E. 40th**  
1911—1927



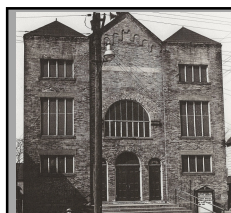
Scovill Ave



**Shomre Shabbos**  
**2565 E. 37th**  
1921—1923



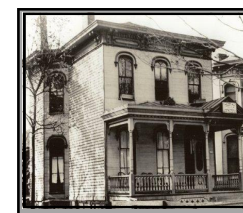
**Anshe Emeth**  
**2541 E. 37th**  
1902—1920



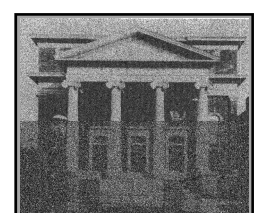
**Oer Chodosh**  
Merged into  
Young Israel 1998  
**2568 E. 38th**  
1912—1923



**Beth Hakeseth  
Anshe Grodno**  
Merged into  
Heights Jewish Center 1951  
**2548 E. 39th**  
1907—1918



**Beth Hamedros  
Anshe Galicia  
Sinai Synagogue**  
Merged with Cedar Rd 2012  
**2540 E. 40th**  
1910—1919



**Kneseth Israel**  
Merged into Taylor Road  
Synagogue 1959  
**2541 E. 46th**  
1906—1927

Woodland Ave

E. 37th

E. 38th

E. 39th

E. 40th

E. 51st

### About the men and their signs.

One of many steps in the "Slum Clearing"  
of Area B in 1958 included an inventory of  
each parcel including a photo.



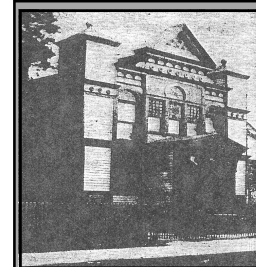
In the summer's of 1959 & 1960 the  
County Auditor conducted an inventory of  
all the parcels within the county.



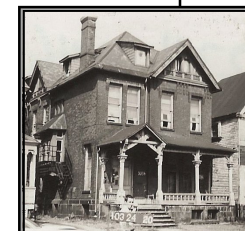
**Excelsior Club**  
1902—1908  
**Education Alliance Council**  
**3754 Woodland Ave.**  
1908 - 1924



**Hebrew Relief Association**  
Currently known as Jewish Family  
Service of Cleveland  
**2554 E. 40th**  
1908—1924



**Bohemian Chebra  
Kadisha - Temple Israel**  
Disbanded circa 1920  
**2641 E. 40th**  
1883—1918



**Martha House**  
**2234 E. 46th**  
1908—1919

**Agudath B'nai Israel  
Anshe Sfard**  
Merged with Taylor Road  
Synagogue 1953  
**2621 E. 51st**  
1921—1925

**Jewish Cleveland  
Haymarket to the Heights**  
© 2012 Jeff Morris  
Woodland, Scovill,  
& E. 40th  
Map # 3 rev.4/27/2013